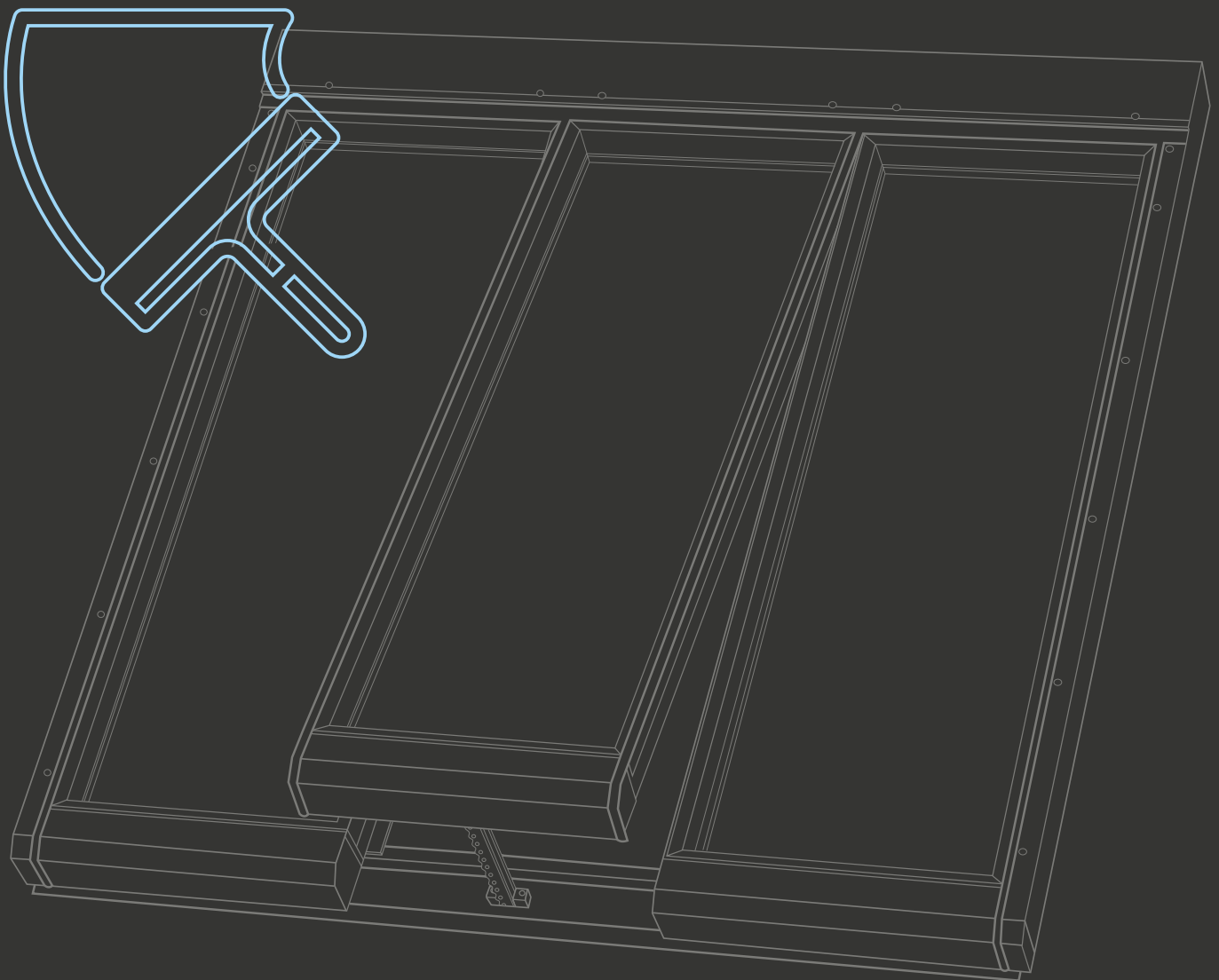


VELUX®

Commercial

VELUX Glazing Panels

Maintenance and cleaning guide



Materials

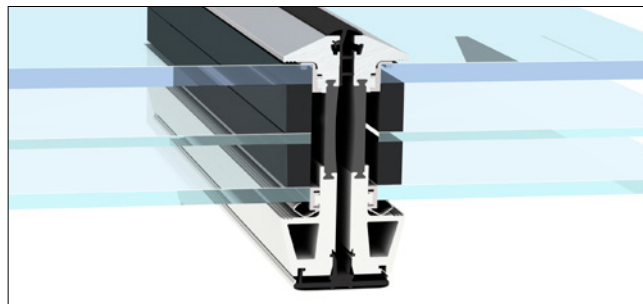
The prefabricated panel, which consists of thermally broken aluminium frame profiles, comes with a glazing unit sealed into the frame. When the panels are joint together on-site, the outer gasket and an inside drainage profile are mounted to secure drainage and a weather-tight solution.

Gaskets are made of EPDM rubber or TPE, mounting brackets are of steel, cover caps and flashings of aluminium.

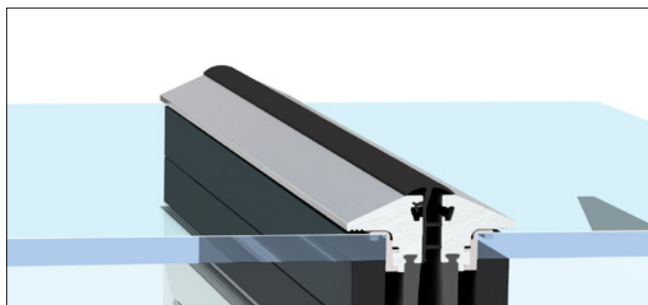
VELUX Glazing Panels comes in either double or triple glazing system. All pictures and illustrations in the guide are triple glazing system.



Frame profile is treated with either as nature anodized or polyester powder coated.



Glazing unit comes with warm edge technology.



Outer gasket is made of 2 component TPE profile.



Mounting brackets made of stainless steel.



Flashings are made of aluminium (1 mm). The surface is treated either as nature anodized or polyester powder coated.



Cover caps are made of aluminium (2mm), the surface is treated either as nature anodized or polyester powder coated. Polystyrene insulation is installed inside the cover cap. EPDM rubber plugs are pushed on the cover caps in the ends.



EPDM rubber, secures tight connection between the panels and the sub-construction in the bottom.



The top installation profile is made of aluminium and EPDM rubber.

Facility planning for maintenance and cleaning

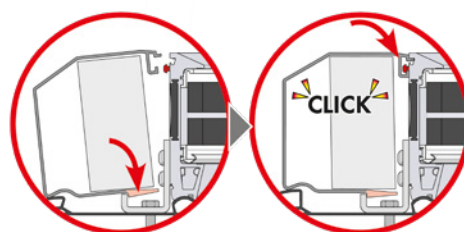
Every year

- A** External aluminium surfaces and glazings can be cleaned with water and ordinary household non-abrasive and noncorrosive detergents. Only soft tools are accredited.
- B** Internal panels and glazings surfaces can be cleaned with water and ordinary household non-abrasive and noncorrosive detergents. Only soft tools are accredited.
- C** It is recommend to lubricate the gaskets. Gaskets shall be replaced if damaged.
- D** Flashing and flashing screws are inspected. Screws tightened as needed. Replace damaged/corroded parts.

- E** Actuator screws and brackets are inspected and tightened as needed.
- F** Actuator, actuator chain and spindle is maintenance free.

Every 5 year

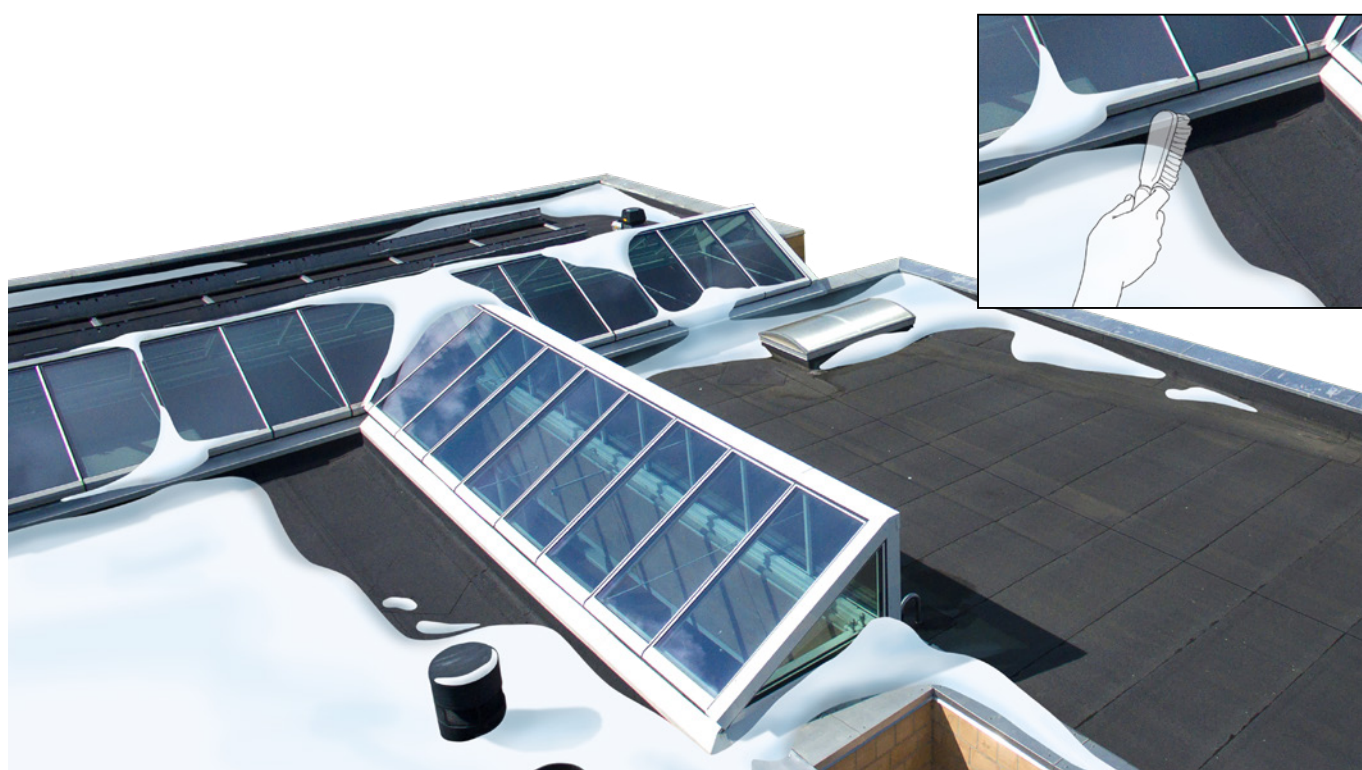
- G** Screws and brackets under flashings and cover caps are inspected for corrosion and tightened as needed.



Seasonal cleaning

Cleaning of / around the rooflights

The flashings and glazings should be cleared of leaves and other debris, since they might prevent the panels from closing. It is important to remove snow, ice and leaves etc. from around the flashing to be certain that rain and melting snow can be drained away from the rooflights.



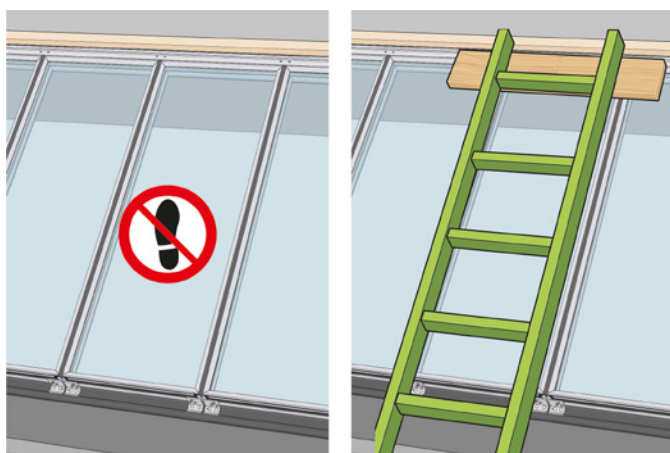
Safety on the roof



Even though our panels are rigorously tested and hold several fall-through certifications, VELUX Commercial do NOT allow walking or stepping on the panels, neither the frame or the glazing.

You cannot walk or step on the flashings.

It is recommended to have the panels cleaned by a professional, as they will have the right tools to clean the panels without stepping on them.



Using the right cleaning tools makes the job fast and easy.

Safety during maintenance

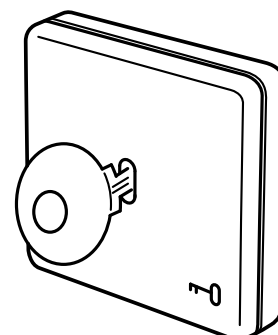
During cleaning/servicing of the rooflights the power to the panels must be switched off in such a way that it cannot be switched on by accident. One way of doing this is to install a key switch which will allow the service technician to temporarily disconnect the power to the rooflights.

Please also consider all other relevant Health & Safety legislation whilst working around VELUX Glazing Panels.

Please note that standing directly on the glazing is strictly forbidden.

Function test

It is recommended to carry out a function test of the rooflights at least once a year and to make sure that they open correctly.



Internal cleaning

VELUX Glazing Panels can be used in most buildings. However, it is important to note that in areas of high humidity condensation may occur.

Condensation occurs naturally when there is high humidity in a building, if there is a great difference between indoor and outdoor temperatures, or if humidity and temperature differences occur over a longer period of time. Condensation can form on the glazing and bottom of the frame. If it builds up, it can sometimes drip down from the rooflight. The rooflight will not be damaged by condensation.

It is important to maintain a healthy and ventilated indoor climate. We recommend to receive consulting services from an engineer to obtain the best possible indoor climate.

If condensation occurs on the rooflight it can be removed with a soft, clean, lint-free cloth/chamois leather/non-abrasive sponge or a clean, non-metal window squeegee.



Maintenance of wind and rain sensor

Only for rooflight with a wind and rain sensor

- It is recommended to carry out at least one functional test annually to ensure that the sensor closes the venting panels when wet.
- Dirt or salt deposits on the sensor may cause operating problems. Therefore, it is recommended to clean the sensor with a soft wet cloth once or twice a year or when required.
- If a mains cable or any other cable is damaged, it must be replaced by qualified personnel in accordance with national regulations.
- If you have any technical questions, please contact your VELUX Commercial sales company.



Maintenance NSHEV

Only for rooflight with NSHEV

VELUX Glazing Panels can be configured for smoke ventilation accordance with EN 12101-2. Smoke ventilation system always has a building specific design, incorporating smoke ventilators, control panel, smoke detectors, battery back up etc. This system must be tested annually and the test must be carried out by local certified company according to EN 12101-2.



Daily operation



User guidance

To maximise performance output, it is sometimes necessary to educate the users about the properties of the solution and train elected employees to operate the rooflights.

Product service

Should the system, for some reason, require professional service, our team of VELUX service technicians will do all they can to solve the problem to everyone's satisfaction.

Guarantee

Our glazing panels and flashings are supported by a 10-year guarantee. Actuators and electrical components that are part of the glazing panel system come with a 3-year guarantee.



To get in touch, please contact your local VELUX Commercial sales office.



VELUX Group
VELUX Commercial
Ådalsvej 99
2970 Hørsholm
Denmark

Web: veluxcommercial.com
Blog: commercial.velux.com/blog



Your preferred partner for
daylight and ventilation solutions

VELUX®

Commercial