

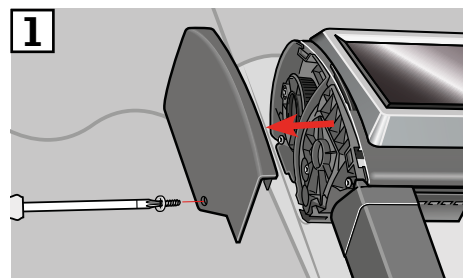
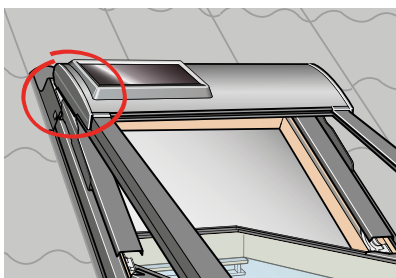
|                    |   |   |
|--------------------|---|---|
| <b>English</b>     | Setup of wall switch KLI 313 to operate VELUX INTEGRA® solar awning blind MSL | 2 |
| <b>Deutsch</b>     | Coming soon   |   |
| <b>Français</b>    | Coming soon   |   |
| <b>Dansk</b>       | Coming soon   |   |
| <b>Nederlands</b>  | Coming soon   |   |
| <b>Italiano</b>    | Coming soon   |   |
| <b>Español</b>     | Coming soon   |   |
| <b>Bosanski</b>    | Coming soon   |   |
| <b>Български</b>   | Coming soon   |   |
| <b>Česky</b>       | Coming soon   |   |
| <b>Eesti</b>       | Coming soon   |   |
| <b>Hrvatski</b>    | Coming soon   |   |
| <b>Latviski</b>    | Coming soon   |   |
| <b>Lietuvių</b>    | Coming soon   |   |
| <b>Magyar</b>      | Coming soon   |   |
| <b>Norsk</b>       | Coming soon   |   |
| <b>Polski</b>      | Coming soon   |   |
| <b>Português</b>   | Coming soon   |   |
| <b>Română</b>      | Coming soon   |   |
| <b>Русский</b>     | Coming soon   |   |
| <b>Slovenščina</b> | Coming soon   |   |
| <b>Slovensky</b>   | Coming soon   |   |
| <b>Srpski</b>      | Coming soon   |   |
| <b>Suomi</b>       | Coming soon   |   |
| <b>Svenska</b>     | Coming soon   |   |
| <b>Türkçe</b>      | Coming soon   |   |
| <b>Українська</b>  | Coming soon   |   |

If a non-functional wall switch must be replaced or if the wall switch cannot find certain products, the products can be prepared for registration by resetting them manually.

**Note:** Reset products cannot be operated until they have been registered in the wall switch again.

**Important:** This only applies to KLI 313.

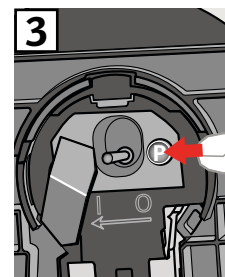
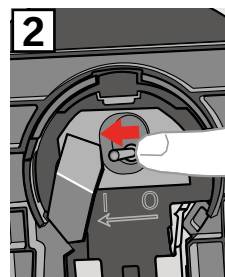
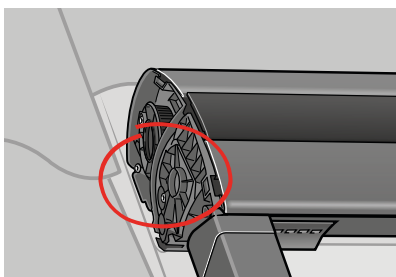
1 Remove plastic cover.



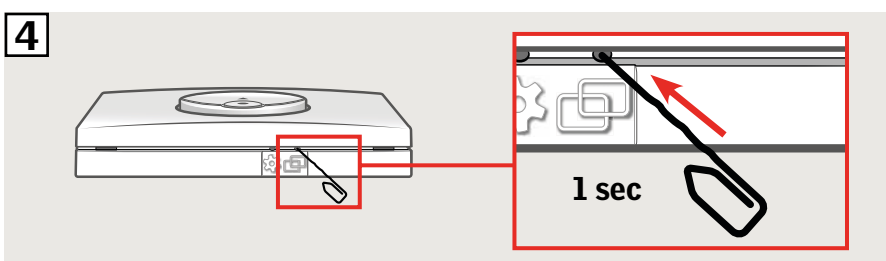
2 Set switch to position I.

3 Press button P briefly.

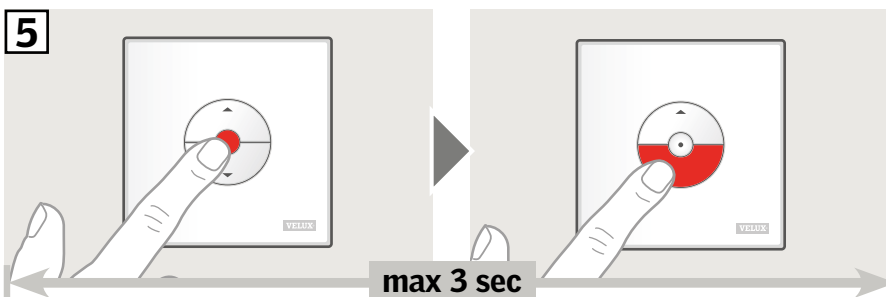
**Note:** Registration (4) and (5) must now be completed within the next 10 minutes.



4 Press PAIR button on the wall switch for 1 second.



5 Press the STOP key and then the DOWN key within 3 seconds.



6 Replace plastic cover.

The awning blind can now be operated with the wall switch.

**Note:** The motor must be adjusted to the size of the window before full operation of the awning blind begins. The adjustment will take place automatically the first time the awning blind is operated. Before the awning blind runs to the preferred position, it runs all the way up and down. Do not interrupt the adjustment!

