

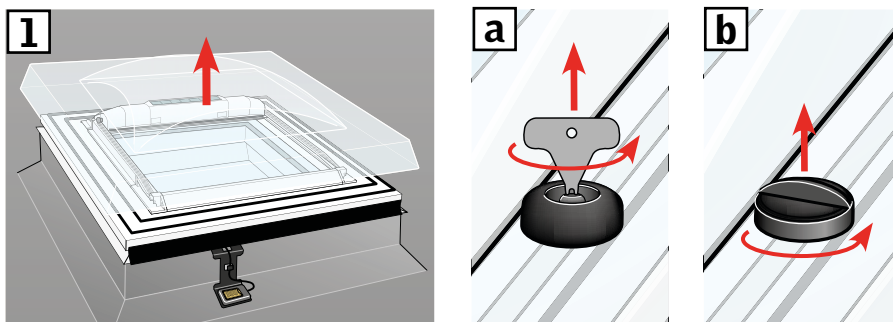
English	Setup of wall switch KLI 313 to operate VELUX INTEGRA® solar awning blind MSG	2
Deutsch	Coming soon	
Français	Coming soon	
Dansk	Coming soon	
Nederlands	Coming soon	
Italiano	Coming soon	
Español	Coming soon	
Bosanski	Coming soon	
Български	Coming soon	
Česky	Coming soon	
Eesti	Coming soon	
Hrvatski	Coming soon	
Latviski	Coming soon	
Lietuvių	Coming soon	
Magyar	Coming soon	
Norsk	Coming soon	
Polski	Coming soon	
Português	Coming soon	
Română	Coming soon	
Русский	Coming soon	
Slovenščina	Coming soon	
Slovensky	Coming soon	
Srpski	Coming soon	
Suomi	Coming soon	
Svenska	Coming soon	
Türkçe	Coming soon	
Українська	Coming soon	

If a non-functional wall switch must be replaced or if the wall switch cannot find certain products, the products can be prepared for registration by resetting them manually.

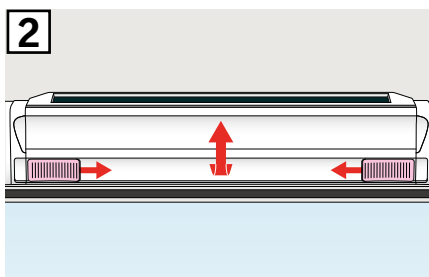
Note: Reset products cannot be operated until they have been registered in the wall switch again.

Important: This only applies to KLI 313.

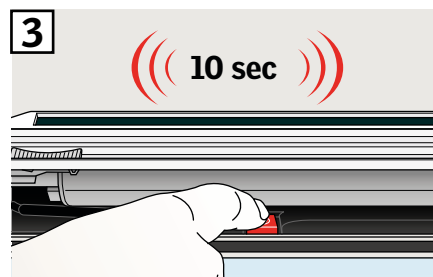
1 Remove dome/top unit.



2 Open compartment on solar awning blind.

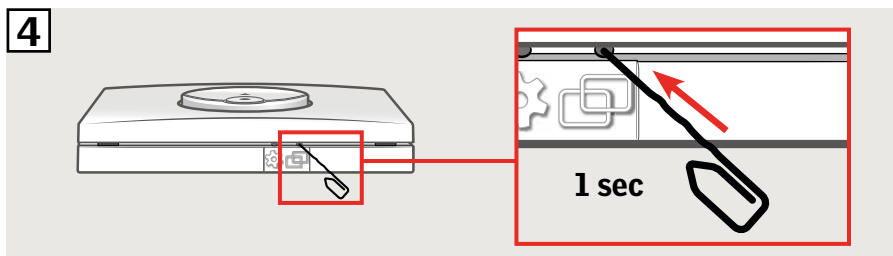


3 Press and hold button. The awning blind runs back and forth three times.

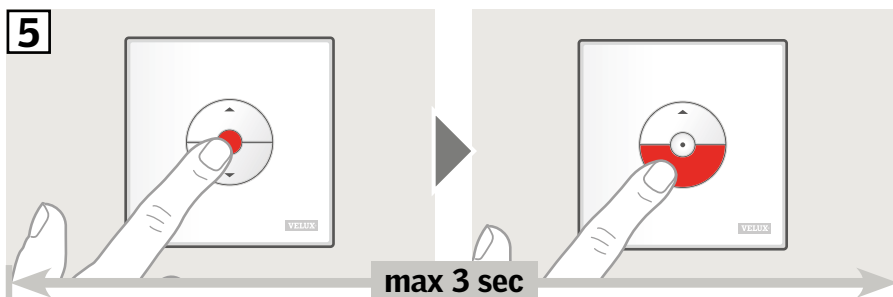


Note: Registration (4) and (5) must now be completed within the next 10 minutes.

4 Press PAIR button on the wall switch for 1 second.



5 Press the STOP key and then the DOWN key within 3 seconds.



6 Replace dome/top unit.

The awning blind can now be operated with the wall switch.

Note: The motor must be adjusted to the size of the window before full operation of the awning blind begins. The adjustment will take place automatically the first time the awning blind is operated. Before the awning blind runs to the preferred position, it opens and closes. Do not interrupt the adjustment!

