

<b>English</b>	Setup of wall switch KLI 311 to operate VELUX INTEGRA® flat roof window CVP	2
<b>Deutsch</b>	Coming soon	
<b>Français</b>	Coming soon	
<b>Dansk</b>	Coming soon	
<b>Nederlands</b>	Coming soon	
<b>Italiano</b>	Coming soon	
<b>Español</b>	Coming soon	
<b>Bosanski</b>	Coming soon	
<b>Български</b>	Coming soon	
<b>Česky</b>	Coming soon	
<b>Eesti</b>	Coming soon	
<b>Hrvatski</b>	Coming soon	
<b>Latviski</b>	Coming soon	
<b>Lietuvių</b>	Coming soon	
<b>Magyar</b>	Coming soon	
<b>Norsk</b>	Coming soon	
<b>Polski</b>	Coming soon	
<b>Português</b>	Coming soon	
<b>Română</b>	Coming soon	
<b>Русский</b>	Coming soon	
<b>Slovenščina</b>	Coming soon	
<b>Slovensky</b>	Coming soon	
<b>Srpski</b>	Coming soon	
<b>Suomi</b>	Coming soon	
<b>Svenska</b>	Coming soon	
<b>Türkçe</b>	Coming soon	
<b>Українська</b>	Coming soon	

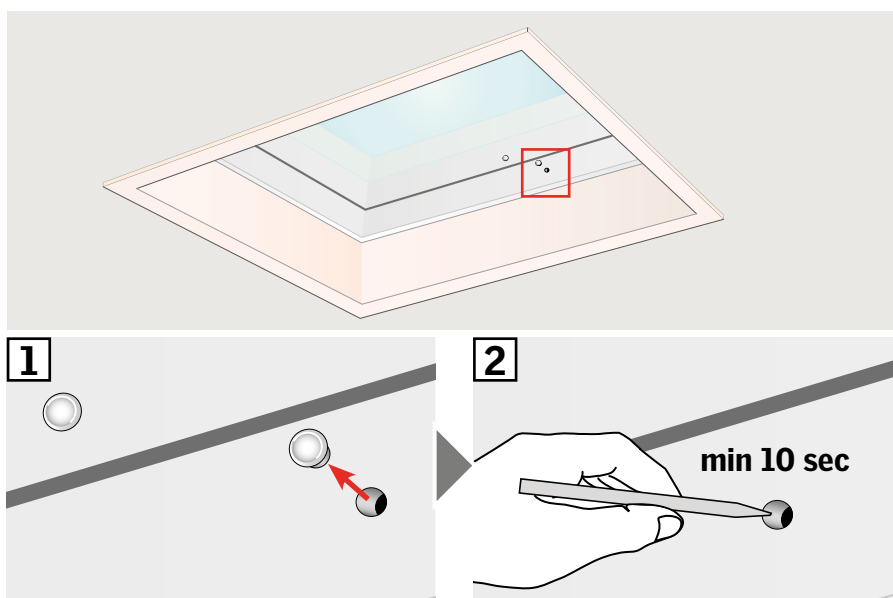
If a non-functional wall switch must be replaced or if the wall switch cannot find certain products, the products can be prepared for registration by resetting them manually.

**Note:** Reset products cannot be operated until they have been registered in the wall switch again.

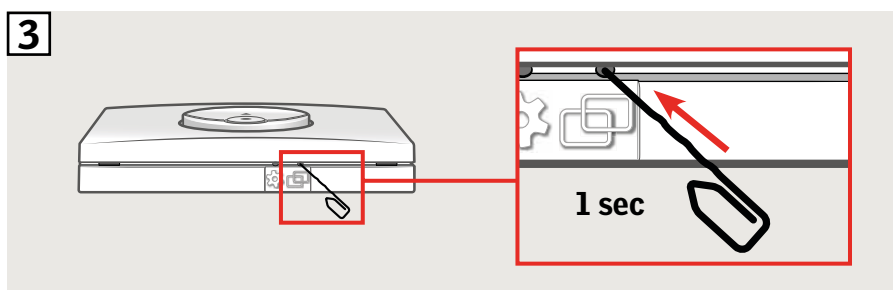
**Important:** This only applies to KLI 311.

- 1 Carefully remove the cover cap on the kerb.
- 2 Press the test button on the window operator behind the cover cap for at least 10 seconds. The window operator will run briefly back and forth.

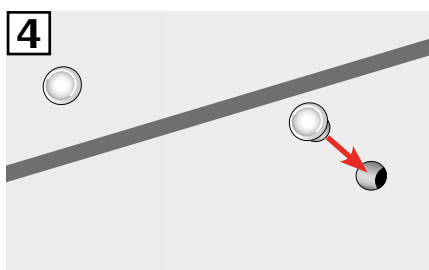
**Note:** Registration (3 and 4) must now be completed within the next 10 minutes.



- 3 Press PAIR button on the wall switch for 1 second.



- 4 Refit cover cap.



The window can now be operated with the wall switch.